

## Pomelli sferici in metallo come DIN 319 EH 24561.

### Descrizione prodotto



#### Materiale

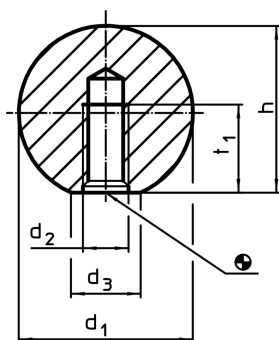
- Acciaio, lucido
- Acciaio inox 1.4305, sabbiato opaco
- Alluminio, lucidato

#### Maggiori informazioni


#### Note

Aggiunta dei pomelli sferici DIN 319 in metallo.

### Disegno



### Caratteristiche

d <sub>1</sub>	d <sub>2</sub>	Dimensioni		t <sub>1</sub> min.	 [g]	Cod.
		d <sub>3</sub> ~ [mm]	h ~			
<b>Acciaio</b>						
16	M 4	8	15,0	7,0	16	<a href="#">24561.0016</a>
20	M 5	12	18,0	9,0	26	<a href="#">24561.0020</a>
25	M 6	15	22,5	11,0	58	<a href="#">24561.0025</a>
32	M 8	18	29,0	14,5	116	<a href="#">24561.0032</a>
40	M10	22	37,0	18,0	241	<a href="#">24561.0040</a>
50	M12	27	46,0	21,0	475	<a href="#">24561.0050</a>
<b>Acciaio inox</b>						
16	M 4	8	15,0	7,0	16	<a href="#">24561.0216</a>
20	M 5	12	18,0	9,0	31	<a href="#">24561.0220</a>
25	M 6	15	22,5	11,0	59	<a href="#">24561.0225</a>
32	M 8	18	29,0	14,5	122	<a href="#">24561.0232</a>
40	M10	22	37,0	18,0	242	<a href="#">24561.0240</a>
<b>Alluminio Al</b>						
16	M 4	8	15,0	7,0	7	<a href="#">24561.0116</a>
20	M 5	12	18,0	9,0	12	<a href="#">24561.0120</a>
25	M 6	15	22,5	11,0	22	<a href="#">24561.0125</a>
32	M 8	18	29,0	14,5	44	<a href="#">24561.0132</a>
40	M10	22	37,0	18,0	87	<a href="#">24561.0140</a>
50	M12	27	46,0	21,0	173	<a href="#">24561.0150</a>

Esempio di applicazione

