

## Maniglie tubolari EH 24321.

### Descrizione prodotto

Tubular handles are used, for example, on machine doors. These tubular handles made of aluminium are characterised by their ergonomic and robust construction and modern design. This version is equipped with angled handle legs (legs).



### Materiale

#### Coperchio

- Plastica, grigio chiaro

#### Impugnatura

- Alluminio, anodizzato
- Alluminio plastificato, simile a RAL 9005 nero, opaco

### Assemblaggio

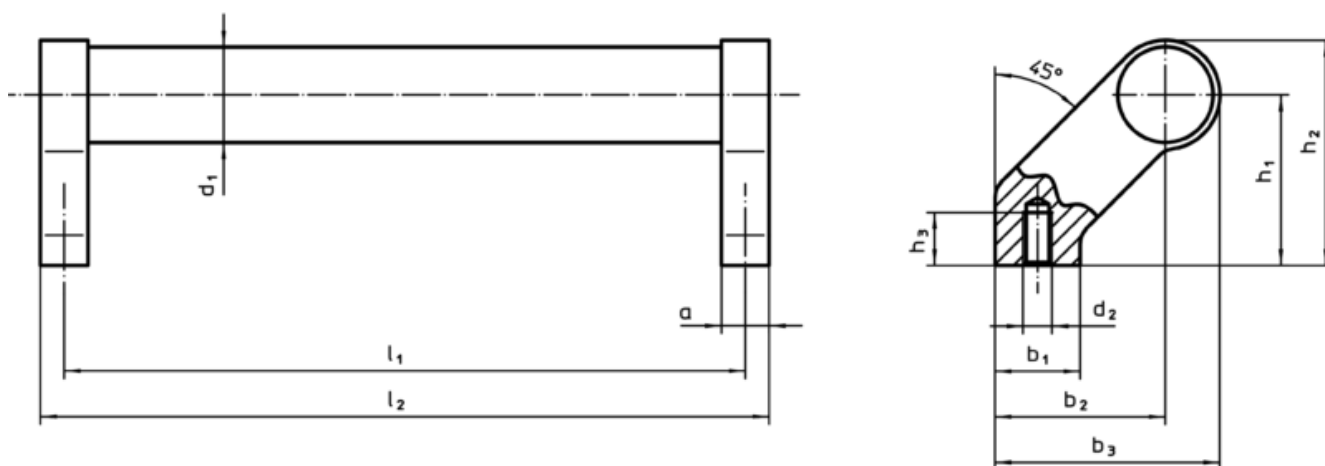
Il montaggio avviene dalla parte posteriore.

### Maggiori informazioni

#### Note

Esecuzioni speciali a richiesta.

### Disegno



### Caratteristiche

d <sub>1</sub>	l <sub>1</sub> ±0,25	a	b <sub>1</sub>	b <sub>2</sub>	Dimensioni			d <sub>2</sub>	h <sub>1</sub>	h <sub>2</sub>	h <sub>3</sub> min.	l <sub>2</sub>	[g]	Cod.
					b <sub>3</sub>	[mm]								
<b>argento</b>														
20	180	12	24	42	54	M6	42	54	12	192	242	24321.0005		
20	200	12	24	42	54	M6	42	54	12	212	246	24321.0010		
20	250	12	24	42	54	M6	42	54	12	262	259	24321.0015		
20	300	12	24	42	54	M6	42	54	12	312	276	24321.0020		
20	350	12	24	42	54	M6	42	54	12	362	292	24321.0025		
20	400	12	24	42	54	M6	42	54	12	412	311	24321.0030		
28	200	14	25	50	66	M8	50	66	15	214	430	24321.0035		
28	250	14	25	50	66	M8	50	66	15	264	440	24321.0040		
28	300	14	25	50	66	M8	50	66	15	314	470	24321.0045		
28	350	14	25	50	66	M8	50	66	15	364	495	24321.0050		
28	400	14	25	50	66	M8	50	66	15	414	500	24321.0055		
28	500	14	25	50	66	M8	50	66	15	514	535	24321.0060		
28	600	14	25	50	66	M8	50	66	15	614	570	24321.0065		
30	200	17	27	51	68	M8	51	68	15	217	426	24321.0070		
30	300	17	27	51	68	M8	51	68	15	317	480	24321.0075		
30	350	17	27	51	68	M8	51	68	15	367	511	24321.0080		
30	400	17	27	51	68	M8	51	68	15	417	538	24321.0085		
30	500	17	27	51	68	M8	51	68	15	517	606	24321.0090		
30	600	17	27	51	68	M8	51	68	15	617	660	24321.0095		

d <sub>1</sub>	l <sub>1</sub> ±0,25	a	b <sub>1</sub>	b <sub>2</sub>	Dimensioni						[g]	Cod.
					b <sub>3</sub>	d <sub>2</sub>	h <sub>1</sub>	h <sub>2</sub>	h <sub>3</sub> min.	l <sub>2</sub>		
[mm]												
<b>nero</b>												
20	180	12	24	42	54	M6	42	54	12	192	242	<a href="#">24321.0505</a>
20	200	12	24	42	54	M6	42	54	12	212	246	<a href="#">24321.0510</a>
20	250	12	24	42	54	M6	42	54	12	262	259	<a href="#">24321.0515</a>
20	300	12	24	42	54	M6	42	54	12	312	276	<a href="#">24321.0520</a>
20	350	12	24	42	54	M6	42	54	12	362	292	<a href="#">24321.0525</a>
20	400	12	24	42	54	M6	42	54	12	412	311	<a href="#">24321.0530</a>
28	200	14	25	50	66	M8	50	66	15	214	430	<a href="#">24321.0535</a>
28	250	14	25	50	66	M8	50	66	15	264	440	<a href="#">24321.0540</a>
28	300	14	25	50	66	M8	50	66	15	314	470	<a href="#">24321.0545</a>
28	350	14	25	50	66	M8	50	66	15	364	495	<a href="#">24321.0550</a>
28	400	14	25	50	66	M8	50	66	15	414	500	<a href="#">24321.0555</a>
28	500	14	25	50	66	M8	50	66	15	514	535	<a href="#">24321.0560</a>
28	600	14	25	50	66	M8	50	66	15	614	570	<a href="#">24321.0565</a>
30	200	17	27	51	68	M8	51	68	15	217	426	<a href="#">24321.0570</a>
30	300	17	27	51	68	M8	51	68	15	317	480	<a href="#">24321.0575</a>
30	350	17	27	51	68	M8	51	68	15	367	511	<a href="#">24321.0580</a>
30	400	17	27	51	68	M8	51	68	15	417	538	<a href="#">24321.0585</a>
30	500	17	27	51	68	M8	51	68	15	517	606	<a href="#">24321.0590</a>
30	600	17	27	51	68	M8	51	68	15	617	660	<a href="#">24321.0595</a>