

## Maniglie EH 24300.



### Descrizione prodotto

U-handles are used, for example, on machine doors, furniture doors, cabinet doors, drawers and drawer units.  
Profilo ergonomico, liscio, di grande robustezza.

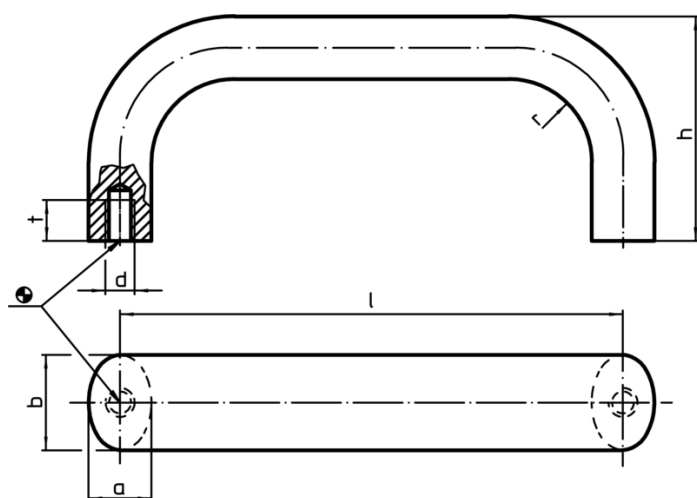
### Materiale

- Impugnatura
- Trafilato di alluminio, lucidato
  - Alluminio, rivestito in resina, simile a RAL 9005, nera
  - Acciaio inox 1.4301 smerigliato opaco

### Assemblaggio


Il montaggio avviene dalla parte posteriore.

### Disegno



### Caratteristiche

b	l ±0,25	a	Dimensioni				t	[g]	Cod.
			d	h	r	[mm]			
Alluminio, lucido									
20	100	13	M6	49	13	10	90	24300.0100	
20	112	13	M6	49	13	10	97	24300.0110	
20	117	13	M6	49	13	10	100	24300.0112	
20	120	13	M6	49	13	10	97	24300.0114	
20	128	13	M6	51	13	10	107	24300.0120	
20	160	13	M6	51	13	10	122	24300.0130	
26	112	17	M8	55	17	12	163	24300.0140	
26	117	17	M8	55	17	12	166	24300.0142	
26	120	17	M8	55	17	12	200	24300.0144	
26	125	17	M8	55	17	12	180	24300.0146	
26	128	17	M8	55	17	12	179	24300.0150	
26	160	17	M8	57	17	12	211	24300.0160	
26	179	17	M8	57	17	12	234	24300.0162	
26	192	17	M8	57	17	12	236	24300.0170	
26	300	17	M8	57	17	12	344	24300.0180	
26	400	17	M8	57	17	12	436	24300.0190	
26	500	17	M8	57	17	12	538	24300.0200	

b	l ±0,25	a	Dimensioni				t	 [g]	Cod.
			d	h	r	[mm]			
<b>Alluminio, nero</b>									
20	100	13	M6	49	13	10	92	<a href="#">24300.0300</a>	
20	112	13	M6	49	13	10	97	<a href="#">24300.0310</a>	
20	117	13	M6	49	13	10	100	<a href="#">24300.0312</a>	
20	120	13	M6	49	13	10	104	<a href="#">24300.0314</a>	
20	128	13	M6	51	13	10	110	<a href="#">24300.0320</a>	
20	160	13	M6	51	13	10	126	<a href="#">24300.0330</a>	
26	112	17	M8	55	17	12	165	<a href="#">24300.0340</a>	
26	117	17	M8	55	17	12	166	<a href="#">24300.0342</a>	
26	120	17	M8	55	17	12	160	<a href="#">24300.0344</a>	
26	125	17	M8	55	17	12	178	<a href="#">24300.0346</a>	
26	128	17	M8	55	17	12	181	<a href="#">24300.0350</a>	
26	160	17	M8	57	17	12	219	<a href="#">24300.0360</a>	
26	179	17	M8	57	17	12	234	<a href="#">24300.0362</a>	
26	192	17	M8	57	17	12	250	<a href="#">24300.0370</a>	
26	300	17	M8	57	17	12	347	<a href="#">24300.0380</a>	
26	400	17	M8	57	17	12	445	<a href="#">24300.0390</a>	
26	500	17	M8	57	17	12	538	<a href="#">24300.0400</a>	
<b>Acciaio inox</b>									
20	112	13	M6	49	13	10	271	<a href="#">24300.0510</a>	
20	128	13	M6	51	13	10	305	<a href="#">24300.0520</a>	
20	160	13	M6	51	13	10	366	<a href="#">24300.0530</a>	
20	200	13	M6	51	13	10	440	<a href="#">24300.0540</a>	
20	250	13	M6	51	13	10	517	<a href="#">24300.0550</a>	
20	300	13	M6	51	13	10	597	<a href="#">24300.0560</a>	
20	400	13	M6	51	13	10	737	<a href="#">24300.0580</a>	

Esempio di applicazione

