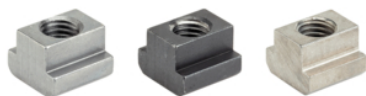


Dadi per cave a T • DIN 508 EH 23010.

Descrizione prodotto



Materiale

- Acciaio bonificato, qualità 8, lucido
- Acciaio bonificato, temperato e brunito, qualità 10
- Acciaio inox 1.4301

Assemblaggio

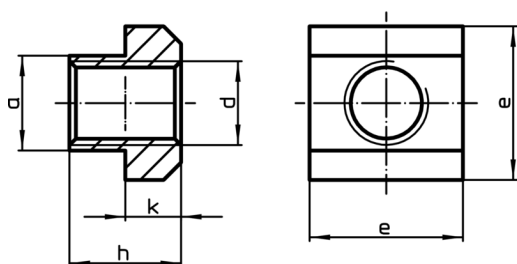
La forza indicata dei dadi a T si applica solamente se la vite viene avvitata per tutta la lunghezza del filetto presente nel dado stesso.

Maggiori informazioni


Note

Esecuzioni speciali a richiesta.


Disegno




Caratteristiche

Dimen- sione cava [mm]	d	a	Dimensioni [mm]			Per cave a T DIN 650 [mm]	Forza di prova per DIN 508 F min. [kN]	 [g]	Cod.
			e	h	k				
Acciaio bonificato, qualità 8, lucido									
5	M 4	4,6	9	6,5	3	5	7,0	2,3	23010.0051
6	M 5	5,6	10	8,0	4	6	11,4	3,4	23010.0061
8	M 6	7,6	13	10,0	6	8	16,0	8,3	23010.0081
10	M 6	9,6	15	12,0	6	10	16,0	14,0	23010.0103 ¹⁾
10	M 8	9,6	15	12,0	6	10	29,0	13,0	23010.0101
12	M 8	11,6	18	14,0	7	12	29,0	23,0	23010.0123 ¹⁾
12	M10	11,6	18	14,0	7	12	46,0	20,0	23010.0121
14	M10	13,6	22	16,0	8	14	46,0	37,0	23010.0143 ¹⁾
14	M12	13,6	22	16,0	8	14	67,0	34,0	23010.0141
16	M12	15,6	25	18,0	9	16	67,0	54,0	23010.0163 ¹⁾
16	M14	15,6	25	18,0	9	16	-	49,0	23010.0161 ¹⁾
18	M14	17,6	28	20,0	10	18	-	74,0	23010.0183 ¹⁾
18	M16	17,6	28	20,0	10	18	128,0	68,0	23010.0181
20	M16	19,6	32	24,0	12	20	128,0	116,0	23010.0203 ¹⁾
20	M18	19,6	32	24,0	12	20	-	108,0	23010.0201 ¹⁾
22	M18	21,6	35	28,0	14	22	-	163,0	23010.0223 ¹⁾
22	M20	21,6	35	28,0	14	22	196,0	149,0	23010.0221
24	M20	23,6	40	32,0	16	24	196,0	237,0	23010.0243 ¹⁾
24	M22	23,6	40	32,0	16	24	-	221,0	23010.0241 ¹⁾
28	M24	27,6	44	36,0	18	28	282,0	330,0	23010.0281

¹⁾ Dimensioni non previste dalla norma DIN.

Dimen- sione cava [mm]	d	Dimensioni				Per cave a T DIN 650 [mm]	Forza di prova per DIN 508 F min. [kN]	 [g]	Cod.
		a	e	h	k				
36	M30	35,5	54	44,0	22	36	448,0	585,0	23010.0361
42	M36	41,5	65	52,0	26	42	653,0	1000,0	23010.0421
48	M42	47,5	75	60,0	30	48	653,0	1500,0	23010.0481
54	M48	53,4	85	70,0	34	54	653,0	2100,0	23010.0541
Acciaio bonificato, temperato e brunito, qualità 10									
5	M 4	4,6	9	6,5	3	5	7,0	2,3	23010.0052
6	M 5	5,6	10	8,0	4	6	11,4	3,4	23010.0062
8	M 6	7,6	13	10,0	6	8	16,0	8,3	23010.0082
10	M 6	9,6	15	12,0	6	10	16,0	14,0	23010.0104 ¹⁾
10	M 8	9,6	15	12,0	6	10	29,0	13,0	23010.0102
12	M 8	11,6	18	14,0	7	12	29,0	23,0	23010.0124 ¹⁾
12	M10	11,6	18	14,0	7	12	46,0	20,0	23010.0122
14	M 6	13,6	22	16,0	8	14	16,0	46,0	23010.0146 ¹⁾
14	M 8	13,6	22	16,0	8	14	29,0	41,0	23010.0145 ¹⁾
14	M10	13,6	22	16,0	8	14	46,0	37,0	23010.0144 ¹⁾
14	M12	13,6	22	16,0	8	14	67,0	34,0	23010.0142
16	M 8	15,6	25	18,0	9	16	29,0	62,0	23010.0166 ¹⁾
16	M10	15,6	25	18,0	9	16	46,0	59,0	23010.0165 ¹⁾
16	M12	15,6	25	18,0	9	16	67,0	54,0	23010.0164 ¹⁾
16	M14	15,6	25	18,0	9	16	-	49,0	23010.0162 ¹⁾
18	M 8	17,6	28	20,0	10	18	29,0	89,0	23010.0187 ¹⁾
18	M10	17,6	28	20,0	10	18	46,0	85,0	23010.0186 ¹⁾
18	M12	17,6	28	20,0	10	18	67,0	80,0	23010.0185 ¹⁾
18	M14	17,6	28	20,0	10	18	-	74,0	23010.0184 ¹⁾
18	M16	17,6	28	20,0	10	18	128,0	68,0	23010.0182
20	M12	19,6	32	24,0	12	20	67,0	131,0	23010.0205 ¹⁾
20	M16	19,6	32	24,0	12	20	128,0	116,0	23010.0204 ¹⁾
20	M18	19,6	32	24,0	12	20	-	108,0	23010.0202 ¹⁾
22	M12	21,6	35	28,0	14	22	67,0	189,0	23010.0225 ¹⁾
22	M16	21,6	35	28,0	14	22	128,0	172,0	23010.0226 ¹⁾
22	M18	21,6	35	28,0	14	22	-	163,0	23010.0224 ¹⁾
22	M20	21,6	35	28,0	14	22	196,0	149,0	23010.0222
24	M16	23,6	40	32,0	16	24	128,0	262,0	23010.0246 ¹⁾
24	M20	23,6	40	32,0	16	24	196,0	237,0	23010.0244 ¹⁾
24	M22	23,6	40	32,0	16	24	-	221,0	23010.0242 ¹⁾
28	M16	27,6	44	36,0	18	28	128,0	375,0	23010.0286 ¹⁾
28	M20	27,6	44	36,0	18	28	196,0	360,0	23010.0284 ¹⁾
28	M22	27,6	44	36,0	18	28	-	333,0	23010.0283 ¹⁾
28	M24	27,6	44	36,0	18	28	282,0	330,0	23010.0282
32	M27	31,5	50	40,0	20	32	-	460,0	23010.0322 ¹⁾
36	M24	35,5	54	44,0	22	36	282,0	600,0	23010.0364 ¹⁾
36	M30	35,5	54	44,0	22	36	448,0	585,0	23010.0362
42	M36	41,5	65	52,0	26	42	653,0	1000,0	23010.0422
48	M42	47,5	75	60,0	30	48	653,0	1500,0	23010.0482
54	M48	53,4	85	70,0	34	54	653,0	2100,0	23010.0542

¹⁾ Dimensioni non previste dalla norma DIN.

Dimen- sione cava [mm]	d	Dimensioni				Per cave a T DIN 650 [mm]	Forza di prova per DIN 508 F min. [kN]	 [g]	Cod.
		a	e	h	k				
Acciaio inox 1.4301									
8	M 6	7,6	13	10,0	6	8	16,0	8,3	23010.0721
10	M 8	9,6	15	12,0	6	10	29,0	13,0	23010.0731
12	M10	11,6	18	14,0	7	12	46,0	20,0	23010.0741
14	M12	13,6	22	16,0	8	14	67,0	34,0	23010.0751
16	M14	15,6	25	18,0	9	16	–	49,0	23010.0761¹⁾
18	M16	17,6	28	20,0	10	18	128,0	68,0	23010.0781

¹⁾ Dimensioni non previste dalla norma DIN.

Esempio di applicazione

