

Grani di bloccaggio con puntale in ottone

EH 22760.



Descrizione prodotto

Per fissare o bloccare assi filettati, alberi oppure pezzi dalla superficie deteriorabile.

Materiale

Piattello

- Ottone

Vite

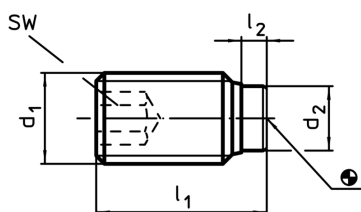
- Acciaio bonificato, 1200 ±100 N/mm²
- Acciaio inox 1.4305

Maggiori informazioni

Altri prodotti

- Grani di bloccaggio, con puntale in plastica

Disegno



Caratteristiche

d ₁	Dimensioni			SW	max. [°C]	[g]	Cod.
	l ₁	l ₂	d ₂				
[mm]							
Acciaio							
M 3	5,0	1,0	1,5	1,5	250	0,2	22760.0032
M 3	7,5	1,0	1,5	1,5	250	0,3	22760.0034
M 3	10,0	1,0	1,5	1,5	250	0,5	22760.0036
M 4	5,0	1,0	2,5	2,0	250	0,3	22760.0040
M 4	6,5	1,2	2,5	2,0	250	0,3	22760.0042
M 4	10,5	1,2	2,5	2,0	250	0,8	22760.0044
M 4	16,5	1,2	2,5	2,0	250	1,2	22760.0046
M 5	6,0	1,0	3,0	2,5	250	0,6	22760.0050
M 5	8,5	1,3	3,0	2,5	250	0,9	22760.0052
M 5	12,5	1,3	3,0	2,5	250	1,4	22760.0054
M 5	20,5	1,3	3,0	2,5	250	2,1	22760.0056
M 6	6,0	1,0	4,0	3,0	250	0,9	22760.0060
M 6	11,5	1,9	4,0	3,0	250	1,7	22760.0062
M 6	17,5	1,9	4,0	3,0	250	2,7	22760.0064
M 6	26,5	1,9	4,0	3,0	250	4,2	22760.0066
M 8	8,0	1,4	5,5	4,0	250	2,2	22760.0080
M 8	12,0	2,5	5,5	4,0	250	3,0	22760.0082
M 8	22,0	2,5	5,5	4,0	250	5,8	22760.0086
M 8	32,0	2,5	5,5	4,0	250	8,9	22760.0088
M10	10,0	1,5	7,0	5,0	250	4,3	22760.0100
M10	14,0	2,7	7,0	5,0	250	5,6	22760.0102
M10	18,0	2,7	7,0	5,0	250	6,7	22760.0104
M10	27,0	2,7	7,0	5,0	250	11,0	22760.0106
M10	37,0	2,7	7,0	5,0	250	16,0	22760.0108
M12	12,0	1,5	8,5	6,0	250	7,5	22760.0120
M12	18,5	3,4	8,5	6,0	250	10,0	22760.0122
M12	22,5	3,4	8,5	6,0	250	12,0	22760.0124
M12	32,5	3,4	8,5	6,0	250	20,0	22760.0126
M12	42,5	3,4	8,5	6,0	250	27,0	22760.0128

d ₁	Dimensioni			SW [mm]	max. [°C]	[g]	Cod.
	l ₁	l ₂	d ₂				
[mm]							
Acciaio inox							
M 3	5,0	1,0	1,5	1,5	250	0,2	22760.0432
M 3	7,5	1,0	1,5	1,5	250	0,3	22760.0434
M 3	10,0	1,0	1,5	1,5	250	0,5	22760.0436
M 4	6,5	1,2	2,5	2,0	250	0,3	22760.0442
M 4	10,5	1,2	2,5	2,0	250	0,8	22760.0444
M 4	16,5	1,2	2,5	2,0	250	1,2	22760.0446
M 5	8,5	1,3	3,0	2,5	250	0,9	22760.0452
M 5	12,5	1,3	3,0	2,5	250	1,4	22760.0454
M 5	20,5	1,3	3,0	2,5	250	2,1	22760.0456
M 6	11,5	1,9	4,0	3,0	250	1,7	22760.0462
M 6	17,5	1,9	4,0	3,0	250	2,7	22760.0464
M 6	26,5	1,9	4,0	3,0	250	4,2	22760.0466
M 8	12,0	2,5	5,5	4,0	250	3,0	22760.0482
M 8	22,0	2,5	5,5	4,0	250	5,8	22760.0486
M 8	32,0	2,5	5,5	4,0	250	8,9	22760.0488
M10	14,0	2,7	7,0	5,0	250	5,6	22760.0502
M10	18,0	2,7	7,0	5,0	250	6,7	22760.0504
M10	27,0	2,7	7,0	5,0	250	11,0	22760.0506
M10	37,0	2,7	7,0	5,0	250	16,0	22760.0508
M12	18,5	3,4	8,5	6,0	250	10,0	22760.0522
M12	22,5	3,4	8,5	6,0	250	12,0	22760.0524
M12	32,5	3,4	8,5	6,0	250	20,0	22760.0526
M12	42,5	3,4	8,5	6,0	250	27,0	22760.0528

Esempio di applicazione

