

Appoggi rastremati EH 22680.



Descrizione prodotto

Sono utilizzati come elementi di riferimento e di appoggio stabili e precisi. La forma rastremata permette il contatto con superfici d'appoggio ridotte. Superficie indurita per induzione e rettificata

Materiale

- Acciaio bonificato, brunito

Disegno

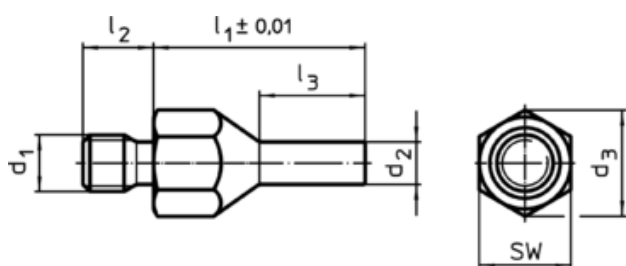


fig. 1

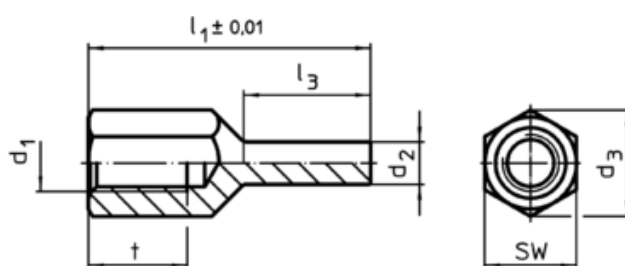



fig. 2

Caratteristiche

| l ₁ ±0,01 | d ₁ | d ₂ | Dimensioni | | | | SW [mm] | Coppia di serraggio max. [Nm] | g | Cod. |
|-------------------------------------|----------------|----------------|----------------|----------------|----|----------------|------------|-------------------------------------|----|------------|
| | | | l ₂ | l ₃ | t | d ₃ | | | | |
| | | | | | | | | | | [mm] |
| Con gambo filettato – Fig. 1 | | | | | | | | | | |
| 20 | M 6 | 4 | 8 | 10,0 | – | 11,0 | 10 | 7 | 8 | 22680.0402 |
| 30 | M 6 | 4 | 8 | 15,0 | – | 11,0 | 10 | 7 | 12 | 22680.0404 |
| 30 | M 8 | 4 | 10 | 15,0 | – | 14,4 | 13 | 18 | 17 | 22680.0412 |
| 40 | M 8 | 4 | 10 | 20,0 | – | 14,4 | 13 | 18 | 23 | 22680.0414 |
| 30 | M 8 | 6 | 10 | 15,0 | – | 14,4 | 13 | 18 | 20 | 22680.0416 |
| 40 | M 8 | 6 | 10 | 20,0 | – | 14,4 | 13 | 18 | 27 | 22680.0418 |
| 30 | M10 | 6 | 14 | 15,0 | – | 19,0 | 17 | 32 | 30 | 22680.0422 |
| 50 | M10 | 6 | 14 | 25,0 | – | 19,0 | 17 | 32 | 51 | 22680.0424 |
| 30 | M10 | 8 | 14 | 15,0 | – | 19,0 | 17 | 32 | 35 | 22680.0426 |
| 50 | M10 | 8 | 14 | 25,0 | – | 19,0 | 17 | 32 | 58 | 22680.0428 |
| 40 | M12 | 6 | 14 | 20,0 | – | 21,2 | 19 | 60 | 48 | 22680.0432 |
| 60 | M12 | 6 | 14 | 30,0 | – | 21,2 | 19 | 60 | 75 | 22680.0434 |
| 40 | M12 | 8 | 14 | 20,0 | – | 21,2 | 19 | 60 | 56 | 22680.0436 |
| 60 | M12 | 8 | 14 | 30,0 | – | 21,2 | 19 | 60 | 83 | 22680.0438 |
| con foro filettato – Fig. 2 | | | | | | | | | | |
| 20 | M 6 | 4 | – | 8,5 | 6 | 11,0 | 10 | 7 | 6 | 22680.0452 |
| 30 | M 6 | 4 | – | 13,5 | 9 | 11,0 | 10 | 7 | 9 | 22680.0454 |
| 30 | M 8 | 4 | – | 13,0 | 10 | 14,4 | 13 | 18 | 13 | 22680.0462 |
| 40 | M 8 | 4 | – | 18,0 | 14 | 14,4 | 13 | 18 | 18 | 22680.0464 |
| 30 | M 8 | 6 | – | 13,0 | 10 | 14,4 | 13 | 18 | 16 | 22680.0466 |
| 40 | M 8 | 6 | – | 18,0 | 14 | 14,4 | 13 | 18 | 21 | 22680.0468 |
| 30 | M10 | 6 | – | 12,0 | 10 | 19,0 | 17 | 32 | 24 | 22680.0472 |
| 50 | M10 | 6 | – | 25,0 | 15 | 19,0 | 17 | 32 | 38 | 22680.0474 |
| 30 | M10 | 8 | – | 12,0 | 10 | 19,0 | 17 | 32 | 28 | 22680.0476 |
| 50 | M10 | 8 | – | 25,0 | 15 | 19,0 | 17 | 32 | 44 | 22680.0478 |

| l ₁ ±0,01 | d ₁ | d ₂ | Dimensioni | | | | SW [mm] | Coppia di serraggio max. [Nm] |  [g] | Cod. |
|-------------------------|----------------|----------------|----------------|----------------|----|----------------|------------|-------------------------------------|--|----------------------------|
| | | | l ₂ | l ₃ | t | d ₃ | | | | |
| 40 | M12 | 6 | – | 18,0 | 12 | 21,2 | 19 | 60 | 36 | 22680.0482 |
| 60 | M12 | 6 | – | 28,0 | 18 | 21,2 | 19 | 60 | 56 | 22680.0484 |
| 40 | M12 | 8 | – | 18,0 | 12 | 21,2 | 19 | 60 | 41 | 22680.0486 |
| 60 | M12 | 8 | – | 28,0 | 18 | 21,2 | 19 | 60 | 63 | 22680.0488 |

Esempio di applicazione

