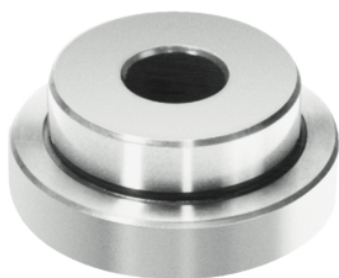


## Perni di riferimento

EH 1141.600 - EH 1143.700

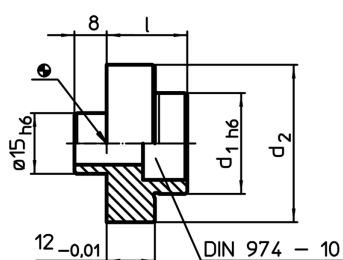
### Descrizione prodotto



#### Materiale

- Acciaio temprato e rettificato

### Disegno



### Caratteristiche

Sistema	Dimensioni			[g]	Cod.
	d <sub>1</sub>	d <sub>2</sub> [mm]	l		
V70	25	39	20	100	<a href="#">1141.600</a>
V70	26	39	20	110	<a href="#">1141.700</a>
V70	28	39	20	110	<a href="#">1141.800</a>
V70	30	49	22	200	<a href="#">1141.900</a>
V70	32	49	22	200	<a href="#">1142.000</a>
V70	34	49	22	200	<a href="#">1142.100</a>
V70	35	49	22	200	<a href="#">1142.200</a>
V70	36	49	22	210	<a href="#">1142.300</a>
V70	38	49	22	230	<a href="#">1142.400</a>
V70	40	59	24	330	<a href="#">1142.500</a>
V70	42	59	24	340	<a href="#">1142.600</a>
V70	44	59	24	350	<a href="#">1142.700</a>
V70	45	59	24	360	<a href="#">1142.800</a>
V70	46	59	24	370	<a href="#">1142.900</a>
V70	48	59	24	380	<a href="#">1143.000</a>
V70	50	69	26	520	<a href="#">1143.100</a>
V70	52	69	26	530	<a href="#">1143.200</a>
V70	54	69	26	550	<a href="#">1143.300</a>
V70	55	69	26	560	<a href="#">1143.400</a>
V70	56	69	26	580	<a href="#">1143.500</a>
V70	58	69	26	600	<a href="#">1143.600</a>
V70	60	69	26	610	<a href="#">1143.700</a>